

SANYO**L5431****High-Precision Variable Shunt Voltage Regulator****Overview**

The L5431 is a high-precision variable shunt voltage regulator IC whose output voltage can be set to a value from approximately 2.5V to 36V by using external resistors. Because of low output resistance and fast pulse response, the L5431 can be most suitably used as high-precision voltage reference, high-speed comparator, or zener diode.

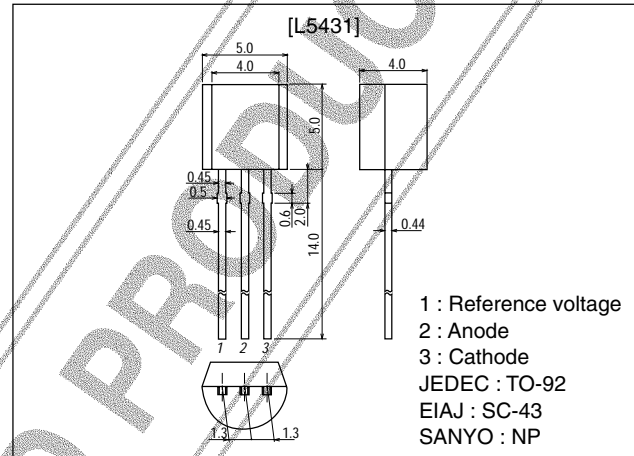
Features

- Excellent temperature characteristic of V_{ref} : 50ppm/°C (typ)
- Output voltage settable : Approximately 2.5V to 36V.
- Output flow-in current range : 1mA to 100mA
- Low dynamic resistance : 0.15Ω (typ)
- Fast response.
- Low output noise voltage.
- Small-sized TO-92.

Package Dimensions

unit:mm

3101

**Specifications****Maximum Ratings** at $T_a = 25^\circ\text{C}$

Parameter	Symbol	Conditions	Ratings	Unit
Maximum Voltage Applied across Cathode and Anode	$V_{KA \max}$	Referenced to anode	37	V
Cathode Current	$I_K \max$		-100 to +150	mA
Reference Voltage Pin Input Current	I_{ref}		-0.05 to +10	mA
Allowable Power Dissipation	$P_d \max$	$T_a=25^\circ\text{C}$	750	mW
Operating Temperature	T_{opr}		-20 to +85	°C
Storage Temperature	T_{stg}		-65 to +150	°C

Recommended Operating Conditions at $T_a = 25^\circ\text{C}$

Parameter	Symbol	Conditions	Ratings	Unit
Voltage Applied across Cathode and Anode	V_{KA}		V_{ref} to 36	V
Cathode Current	I_K	Stabilized state	1 to 100	mA

■ Any and all SANYO products described or contained herein do not have specifications that can handle applications that require extremely high levels of reliability, such as life-support systems, aircraft control systems, or other applications whose failure can be reasonably expected to result in serious physical and/or material damage. Consult with your SANYO representative nearest you before using any SANYO products described or contained herein in such applications.

■ SANYO assumes no responsibility for equipment failures that result from using products at values that exceed, even momentarily, rated values (such as maximum ratings, operating condition ranges, or other parameters) listed in products specifications of any and all SANYO products described or contained herein.

SANYO Electric Co.,Ltd. Semiconductor Company

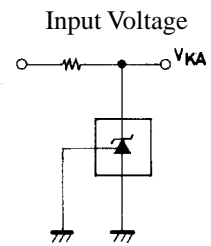
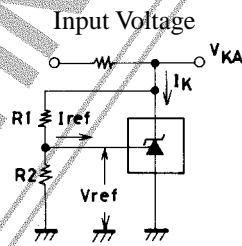
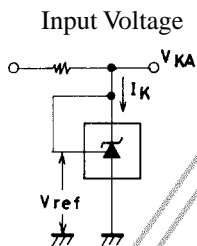
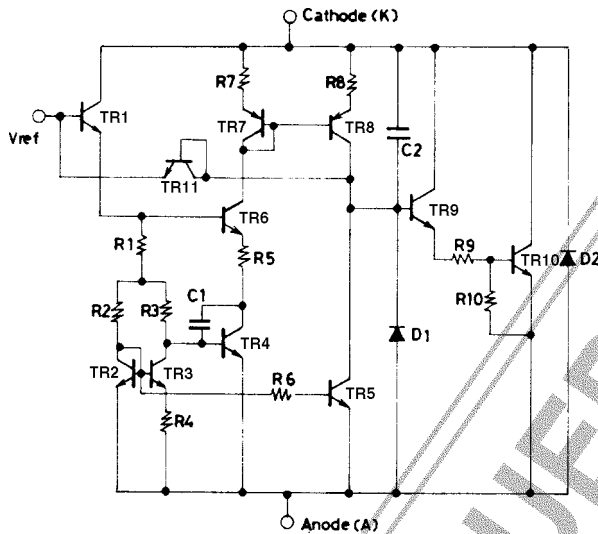
TOKYO OFFICE Tokyo Bldg., 1-10, 1 Chome, Ueno, Taito-ku, TOKYO, 110-8534 JAPAN

L5431

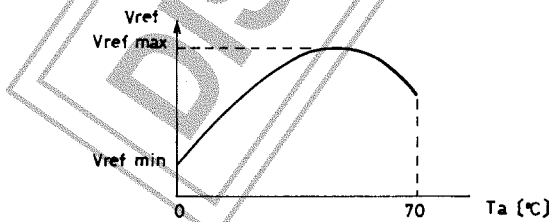
Electrical Characteristics at Ta = 25°C

Parameter	Symbol	Conditions	Ratings			Unit
			min	typ	max	
Reference Voltage	Vref	VKA=Vref, IK=10mA : Fig.1	2440	2495	2550	mV
Reference Voltage Change with Temperature (Note1)	ΔVref (Ta)	VKA=Vref, IK=10mA, Ta=0 to +70°C : Fig.1		8	17	mV
Vref Change Ratio to VKA	$\frac{\Delta V_{ref}}{\Delta V_{KA}}$	IK=10mA, ΔVKA=10V to Vref : Fig.2		-1.4	-2.7	mV/V
		IK=10mA, ΔVKA=36V to 10V : Fig.2		-1.0	-2.0	mV/V
Reference Voltage Pin Input Current Change with Temperature (Note1)	ΔIref (Ta)	IK=10mA, R1=10kΩ, R2=∞, Ta=0 to +70°C : Fig.2		2	4	μA
Minimum Cathode Current	IKMIN	VKA=Vref, regulation available : Fig1		0.4	1	mA
OFF-Stage Cathode Current	IKoff	VKA=36V, Vref=0 : Fig.3		0.1	1	μA
Dynamic Resistance (Note2)	ZKA	VKA=Vref, fs=1kHz, IK=1 to 100mA : Fig.1		0.15	0.5	Ω

Equivalent Circuit Diagram

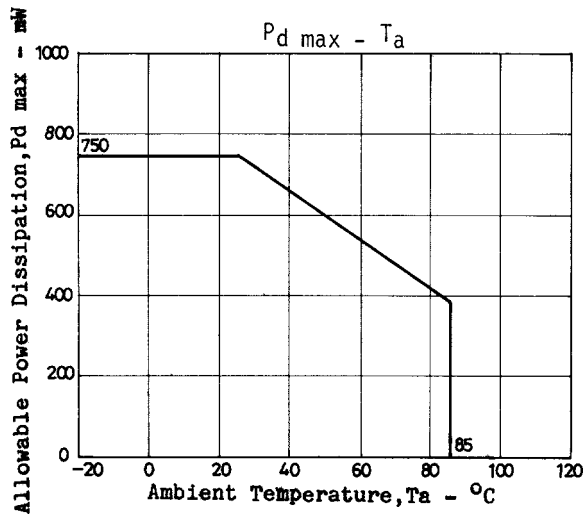


Note1 : ΔVref (Ta) is defined by using Vref max and Vref min as follows :
 $\Delta V_{ref} (Ta) = V_{ref \max} - V_{ref \min}$



Note2 : The dynamic resistance is defined as follows :

$$|Z_{KA}| = \frac{\Delta V_{KA}}{\Delta I_K}$$



- Specifications of any and all SANYO products described or contained herein stipulate the performance, characteristics, and functions of the described products in the independent state, and are not guarantees of the performance, characteristics, and functions of the described products as mounted in the customer's products or equipment. To verify symptoms and states that cannot be evaluated in an independent device, the customer should always evaluate and test devices mounted in the customer's products or equipment.
- SANYO Electric Co., Ltd. strives to supply high-quality high-reliability products. However, any and all semiconductor products fail with some probability. It is possible that these probabilistic failures could give rise to accidents or events that could endanger human lives, that could give rise to smoke or fire, or that could cause damage to other property. When designing equipment, adopt safety measures so that these kinds of accidents or events cannot occur. Such measures include but are not limited to protective circuits and error prevention circuits for safe design, redundant design, and structural design.
- In the event that any or all SANYO products (including technical data, services) described or contained herein are controlled under any of applicable local export control laws and regulations, such products must not be exported without obtaining the export license from the authorities concerned in accordance with the above law.
- No part of this publication may be reproduced or transmitted in any form or by any means, electronic or mechanical, including photocopying and recording, or any information storage or retrieval system, or otherwise, without the prior written permission of SANYO Electric Co., Ltd.
- Any and all information described or contained herein are subject to change without notice due to product/technology improvement, etc. When designing equipment, refer to the "Delivery Specification" for the SANYO product that you intend to use.
- Information (including circuit diagrams and circuit parameters) herein is for example only; it is not guaranteed for volume production. SANYO believes information herein is accurate and reliable, but no guarantees are made or implied regarding its use or any infringements of intellectual property rights or other rights of third parties.

This catalog provides information as of January, 2000. Specifications and information herein are subject to change without notice.