

# MB3730A

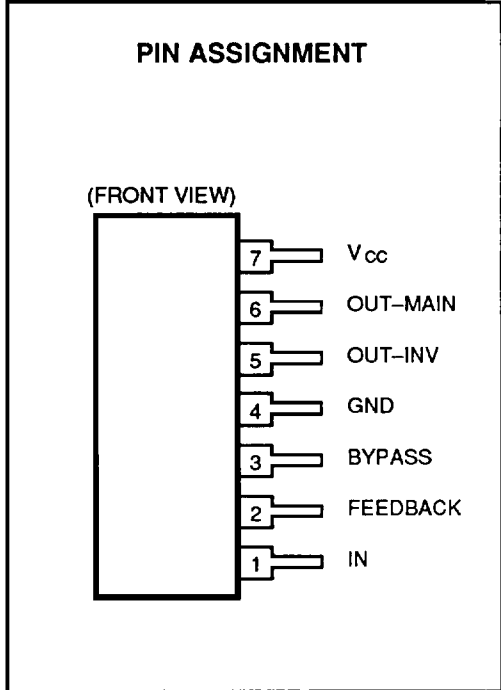
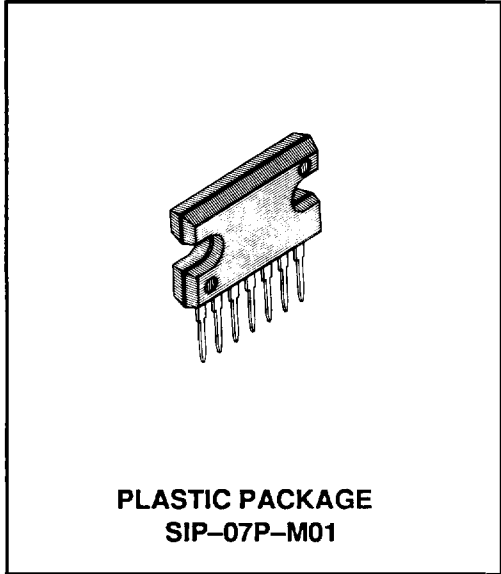
## 14 W BTL AUDIO POWER AMPLIFIER

### 14 W BTL AUDIO POWER AMPLIFIER WITH DC MUTE FUNCTION

The Fujitsu MB3730A is designed for a low-frequency high-power amplifier with internal BTL (Balanced Transformer Less) circuitry. The MB3730A is packed in 7 pin single in line plastic package and requires a few external components, this enables high density mounting. Design for heat radiation is easy because thermal resistance is low 3°C/W.

The MB3730A contains internal power-on pop noise protection circuit and various protection circuits. The device is suitable best for car-stereo.

- High power output : 14W typ. (RL = 4Ω)
- Low noise output voltage : 1.0 mV typ.
- Low total harmonic distortion : 0.2 % typ.
- Minimum external components
- Various protection circuits
  - Over voltage protection
  - Load short protection
  - Thermal protection
  - Short protection circuit against Vcc and GND.
- No break-down: between pins is shorted or inverted insertion
- Low thermal resistance : 3°C/W
- On-chip power-on pop noise protection circuit



**ABSOLUTE MAXIMUM RATINGS (see NOTE) (Tc=25°C)**

Rating	Symbol	Value	Unit
Power Supply Voltage	V <sub>CC</sub>	18	V
Power Supply Voltage (Surge)	V <sub>CCS</sub>	50 *	V
Output Current (Peak)	I <sub>OPEAK</sub>	4.5	A
Power Dissipation	P <sub>D</sub>	18	W
Operating Temperature (Case)	T <sub>C</sub>	-20 to +75	°C
Storage Temperature	T <sub>STG</sub>	-55 to +150	°C

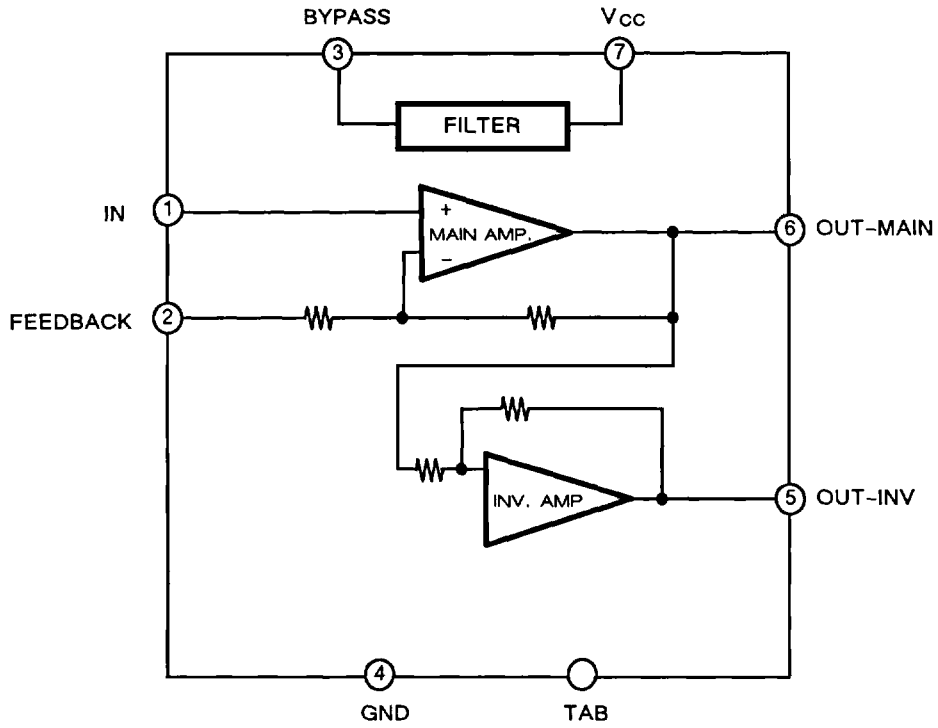
Note: \* t<sub>s</sub> ≤ 0.2 sec, t<sub>r</sub> ≥ 1 msec

Permanent device damage may occur if the above **Absolute Maximum Ratings** are exceeded. Functional operation should be restricted to the conditions as detailed in the operational sections of this data sheet. Exposure to absolute maximum rating conditions for extended periods may affect device reliability.

This device contains circuitry to protect the inputs against damage due to high static voltages or electric fields. However, it is advised that normal precautions be taken to avoid application of any voltage higher than maximum rated voltages to this high impedance circuit.

\*FUJMS062\*

Fig. 1 - MB3730A BLOCK DIAGRAM



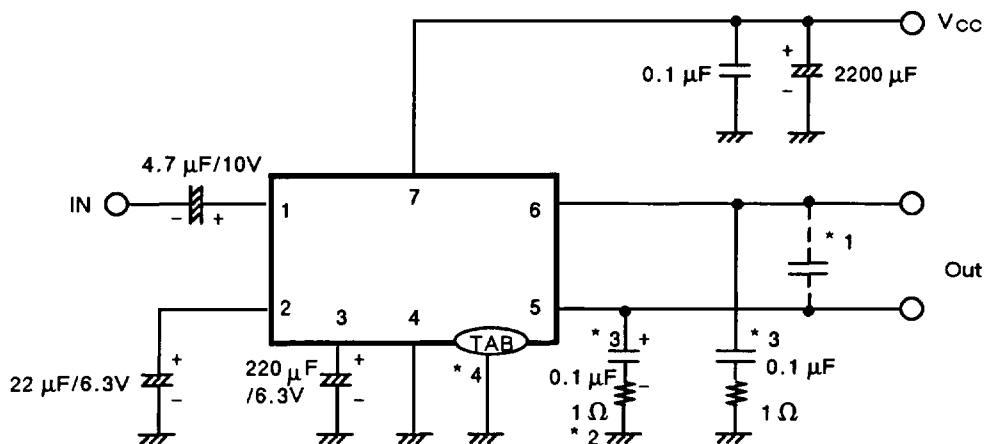
RECOMMENDED OPERATING CONDITIONS

Parameter	Symbol	Value	Unit
Power Supply Voltage	Vcc	8 to 16	V
Operating Temperature(Case)	Tc	-20 to +75	°C

# ELECTRICAL CHARACTERISTICS (T<sub>c</sub> = 25°C, V<sub>CC</sub> = 13.2V, R<sub>L</sub> = 4Ω, f = 1kHz)

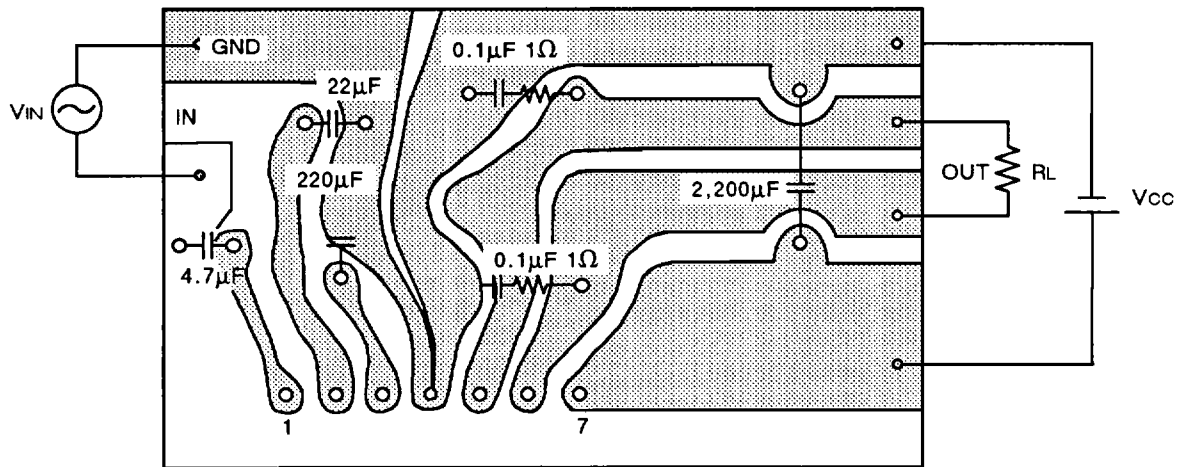
Parameter	Symbol	Condition	Values			Unit
			Min	Typ	Max	
Quiescent Power Supply Current	I <sub>Q</sub>	V <sub>in</sub> =0V, R <sub>L</sub> = ∞		80	200	mA
Voltage Gain	A <sub>V</sub>	P <sub>O</sub> = 1W	52.5	55	57.5	dB
Output Power	P <sub>O</sub>	THD=10%	10	14		W
Total Harmonic Distortion	THD	P <sub>O</sub> =1W		0.2	1.0	%
Output Noise Voltage	V <sub>NO</sub>	R <sub>0</sub> =10kΩ, BW=20 Hz to 20kHz		1.0	2.0	mV
Input Resistance	R <sub>IN</sub>		40	70		kΩ
Output Offset Voltage	V <sub>00</sub>	V <sub>IN</sub> = 0V		0.2	0.4	V

Fig. 2 - TYPICAL CONNECTION EXAMPLE



- Notes:
- \*1 Effective to prevent from oscillation depending on printing pattern.
  - \*2 When power supply line is stable, please connect with V<sub>CC</sub> side, it restrains the oscillation.
  - \*3 Use Mylar Capacitor.
  - \*4 The TAB should be connected with GND.

Fig. 3 - RECOMMENDED CONNECTION PATTERN (BOTTOM VIEW)



## TYPICAL CHARACTERISTICS CURVES

Fig. 4 - TOTAL HARMONIC DISTORTION vs. OUTPUT POWER

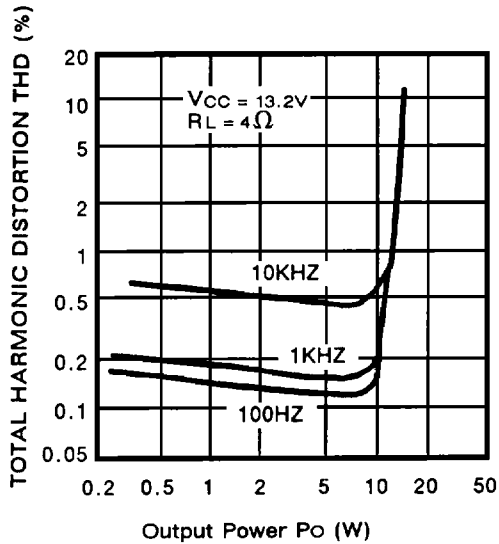
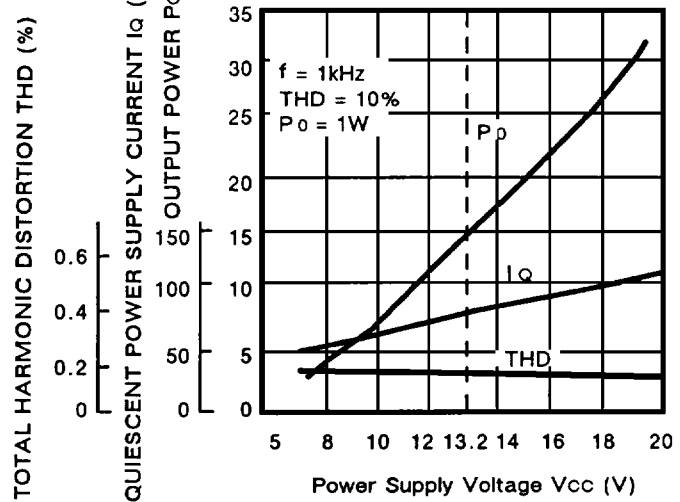


Fig. 5 - OUTPUT POWER/TOTAL HARMONIC DISTORTION/QUIESCENT POWER SUPPLY CURRENT vs. POWER SUPPLY VOLTAGE



# TYPICAL CHARACTERISTICS CURVES (Continued)

Fig. 6 - VOLTAGE GAIN vs. FREQUENCY

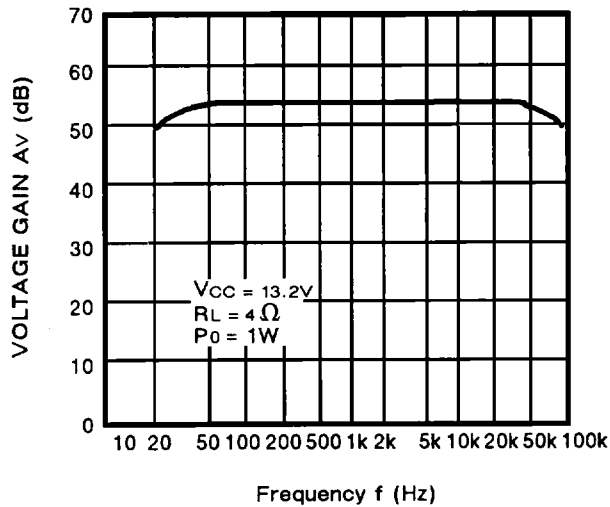


Fig. 7 - TOTAL HARMONIC DISTORTION vs. FREQUENCY

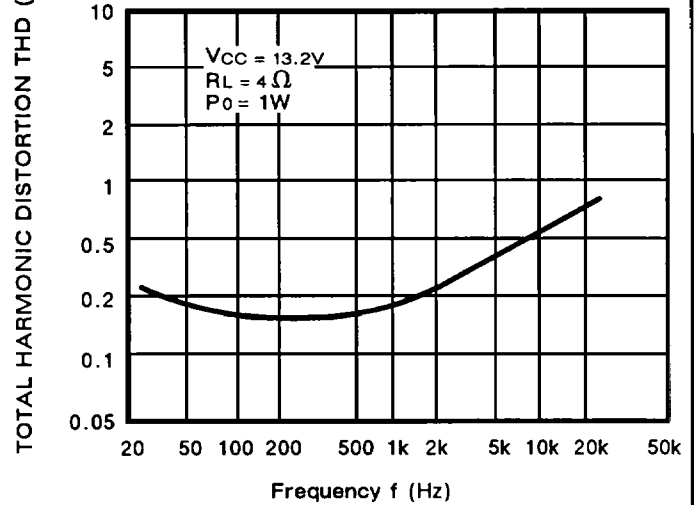
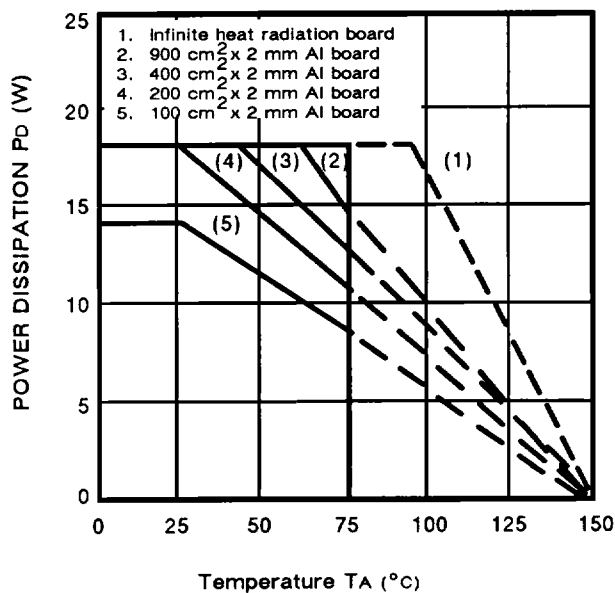


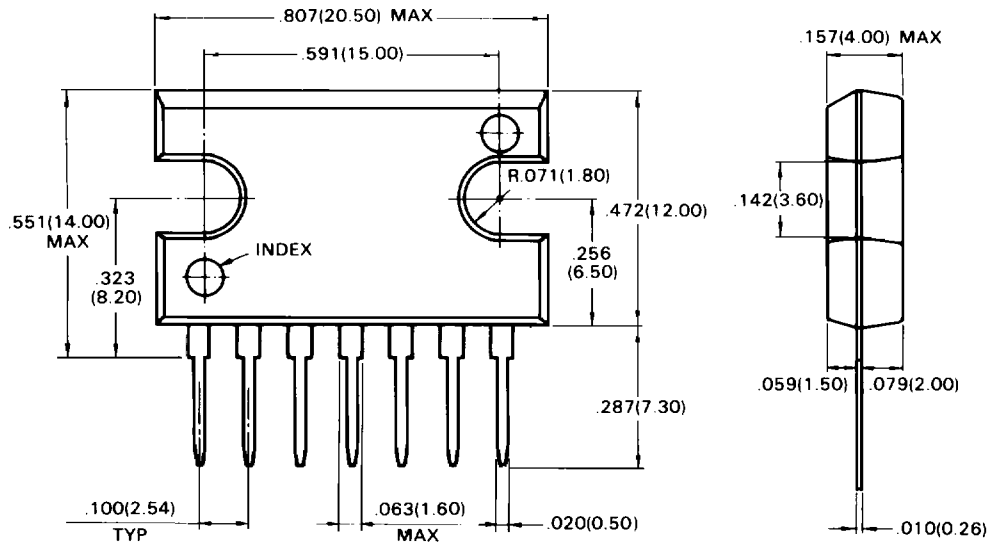
Fig. 8 - POWER DISSIPATION vs. TEMPERATURE



# PACKAGE DIMENSION

## 7-LEAD PLASTIC SINGLE IN-LINE PACKAGE

(Case No. : SIP-7P-M01)



©1988 FUJITSU LIMITED S07002S-1C

Dimensions in  
inches (millimeters)

All Rights Reserved.

Circuit diagrams utilizing Fujitsu products are included as a means of illustrating typical semiconductor applications. Complete information sufficient for construction purposes is not necessarily given.

The information contained in this document has been carefully checked and is believed to be reliable. However, Fujitsu assumes no responsibility for inaccuracies.

The information contained in this document does not convey any license under the copyrights, patent rights or trademarks claimed and owned by Fujitsu.

Fujitsu reserves the right to change products or specifications without notice.

No part of this publication may be copied or reproduced in any form or by any means, or transferred to any third party without prior written consent of Fujitsu.

# FUJITSU LIMITED

For further information please contact:

## Japan

FUJITSU LIMITED  
Integrated Circuits and Semiconductor Marketing  
Furukawa Sogo Bldg., 6-1, Marunouchi 2-chome  
Chiyoda-ku, Tokyo 100, Japan  
Tel: (03) 216-3211  
Telex: 781-2224361  
FAX: (03) 216-9771

## North and South America

FUJITSU MICROELECTRONICS, INC.  
Integrated Circuits Division  
3545 North First Street  
San Jose, CA 95134-1804 USA  
Tel: 408 -922-9000  
Telex: 910-338-0190  
FAX: 408-432-9044

## Europe

FUJITSU MIKROELEKTRONIK GmbH  
Arabella Centre 9. OG  
Lyoner Strasse 44-48  
D-6000 Frankfurt 71  
F.R. Germany  
Tel: (069) 66320  
Telex: 411963  
FAX: (069) 6632122

## Asia

FUJITSU MICROELECTRONICS ASIA PTE LIMITED  
#06-04 to #06-07  
Plaza By The Park  
No. 51 Bras Basah Road  
Singapore 0719  
Tel: 336-1600  
Telex: 55573  
FAX: 336-1609