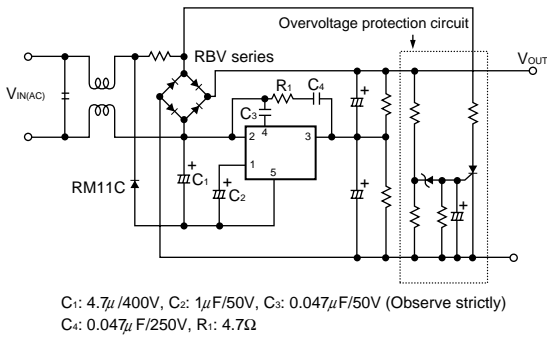


| Setting Switchover Voltage | | RMS On-state Current I _T (RMS) (A) | | Remarks | Fig. No. |
|----------------------------|----------------------------|---|----------|--------------------------|----------|
| V _c (DC) (V) | V _c (AC) (V) | 5 | 10 | | |
| 205±5 | 145 | STR82145 | STR83145 | With latching capability | 1 |
| 225±5 | 159 | | STR83159 | With latching capability | |

Example of application circuit



External Dimensions

• No. 1

