

# LARGE CAN TYPE

# HP

Series

Snap-in Terminal, Wide Temperature Range

JAMICON®

- Three kinds of terminal are available for your use.
- High temperature 105°C, high ripple current and high reliability.

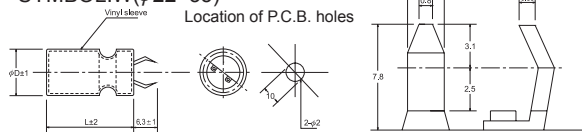


## ● SPECIFICATION

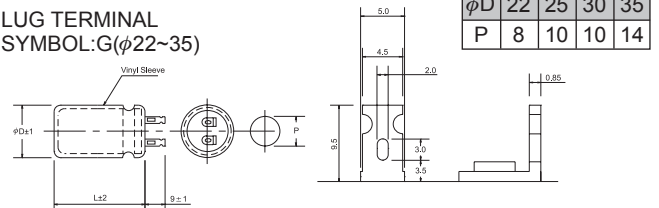
| Item                                    | Characteristic   |                                   |      |      |      |        |              |         |      |      |      |      |
|---|--|-----------------------------------|------|------|------|--------|--------------|---------|------|------|------|------|
| Operation Temperature Range             | -40 ~ +105°C   |                                   |      |      |      |        | -25 ~ +105°C |         |      |      |      |      |
| Rated Working Voltage                   | 16 ~ 100VDC  |                                   |      |      |      |        | 160 ~ 400VDC |         |      |      |      |      |
| Capacitance Tolerance (120Hz 20°C)      | ±20%(M)  |                                   |      |      |      |        |              |         |      |      |      |      |
| Leakage Current (20°C)                  | $I \leq 0.02CV$ or 3 (mA) *Whichever is smaller after 5 minutes<br>I : Leakage Current(μA) C : Rated Capacitance(μF) V : Working Voltage(V)                            |                                   |      |      |      |        |              |         |      |      |      |      |
| Surge Voltage (20°C)                    | W.V.   | 16                                | 25   | 35   | 50   | 63     | 100          | 160     | 200  | 250  | 350  | 400  |
|   | S.V.   | 20                                | 32   | 44   | 63   | 79     | 125          | 200     | 250  | 300  | 400  | 450  |
| Dissipation Factor (tan δ) (120Hz 20°C) | W.V.   | 16                                | 25   | 35   | 50   | 63     | 100          | 160     | 200  | 250  | 350  | 400  |
|   | tan δ  | 0.45                              | 0.35 | 0.30 | 0.25 | 0.25   | 0.20         | 0.15    | 0.15 | 0.15 | 0.20 | 0.20 |
| Low Temperature Stability               | Impedance ratio at 120Hz   |                                   |      |      |      |        |              |         |      |      |      |      |
|   | Rated Voltage (V)  | 16                                | 25   | 35   | 50   | 63~100 | 160~250      | 350~400 |      |      |      |      |
|   | -25°C / +20°C  | 6                                 | 6    | 6    | 4    | 3      | 4            | 6       |      |      |      |      |
|   | -40°C / +20°C  | 15                                | 15   | 10   | 8    | 6      | —            | —       |      |      |      |      |
| Load Life                               | After 2000 hours application of W.V. and +105°C ripple current value, the capacitor shall meet the following limits. (DC + ripple peak voltage ≦ rate working voltage) |                                   |      |      |      |        |              |         |      |      |      |      |
|   | Capacitance Change   | ≦ ±20% of initial value           |      |      |      |        |              |         |      |      |      |      |
|   | Dissipation Factor   | ≦ 200% of initial specified value |      |      |      |        |              |         |      |      |      |      |
|   | Leakage current  | ≦ initial specified value         |      |      |      |        |              |         |      |      |      |      |
| Shelf Life                              | At +105°C no voltage application after 1000 hours, the capacitor shall meet the limits for load life characteristics. (with voltage treatment)                         |                                   |      |      |      |        |              |         |      |      |      |      |

## ● TERMINAL TYPE

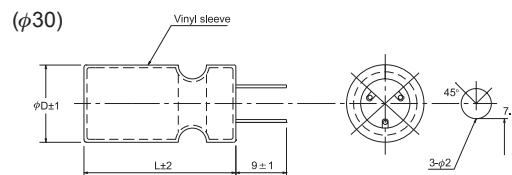
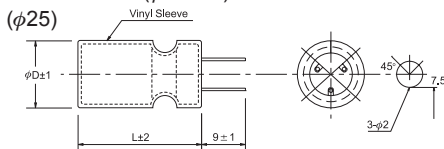
▲ P.C.B. TERMINAL (SNAP IN)  
SYMBOL:W(φ22~35)



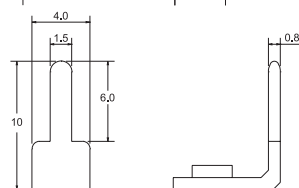
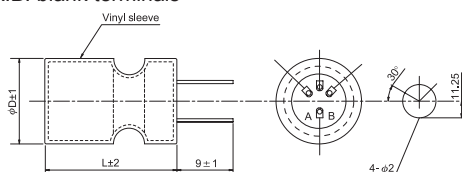
▲ LUG TERMINAL  
SYMBOL:G(φ22~35)



▲ P.C.B. TERMINAL  
SYMBOL:V(φ25~35)



(φ35)  
A.B. blank terminals



## ● RIPPLE CURRENT COEFFICIENTS

| Temperature(°C) | 45   | 60   | 85   | 105  |
|-----------------|------|------|------|------|
| Multiplier      | 2.55 | 2.25 | 1.65 | 1.00 |

| Frequency(Hz) | 60         | 120  | 300  | 1k   | 10k  | 100k |
|---------------|------------|------|------|------|------|------|
| W.V.          | Multiplier |      |      |      |      |      |
| 16~50V        | 0.90       | 1.00 | 1.03 | 1.05 | 1.10 | 1.10 |
| 63~100V       | 0.85       | 1.00 | 1.07 | 1.13 | 1.19 | 1.20 |
| 160~400V      | 0.80       | 1.00 | 1.15 | 1.25 | 1.35 | 1.40 |

